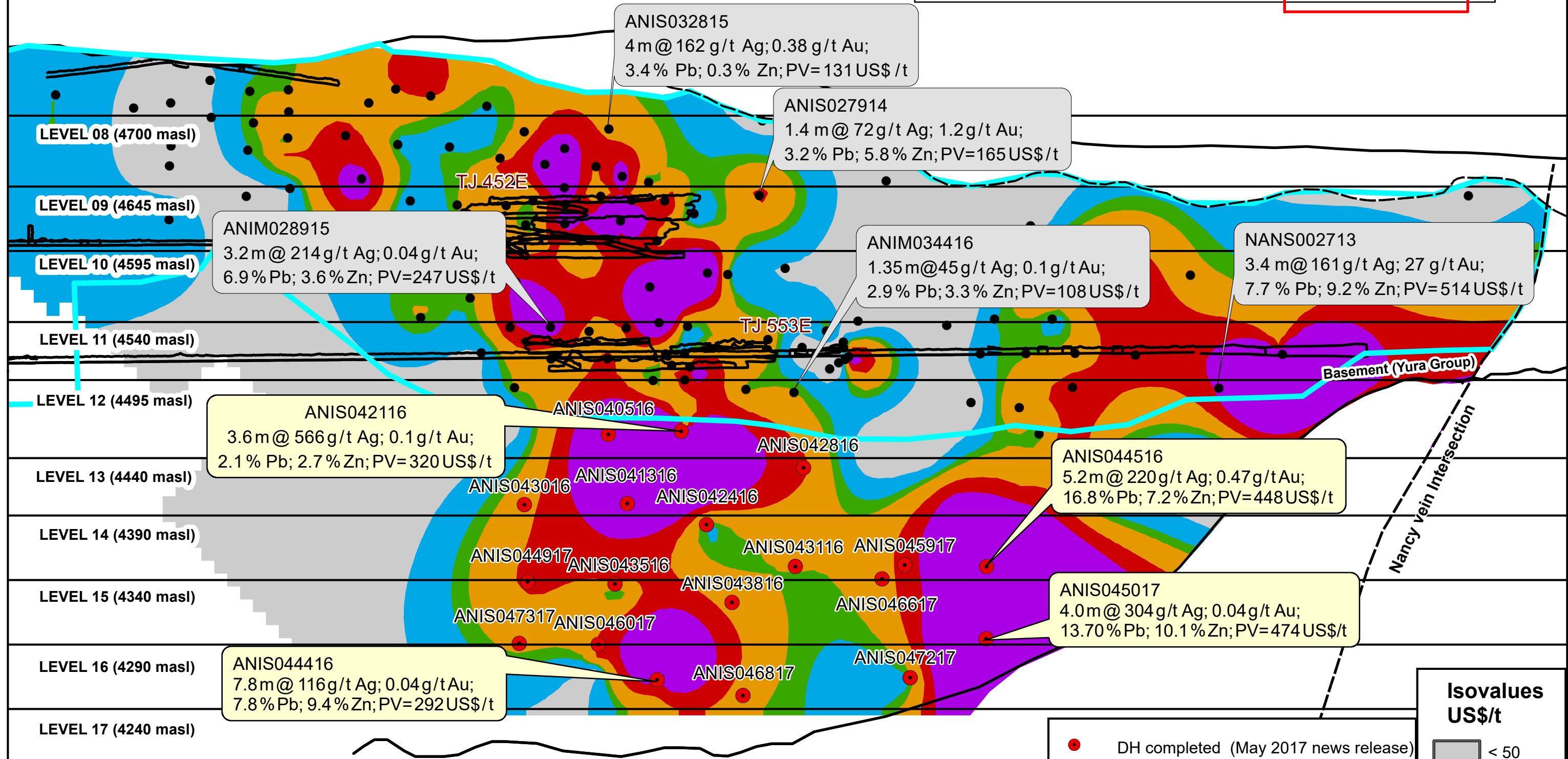
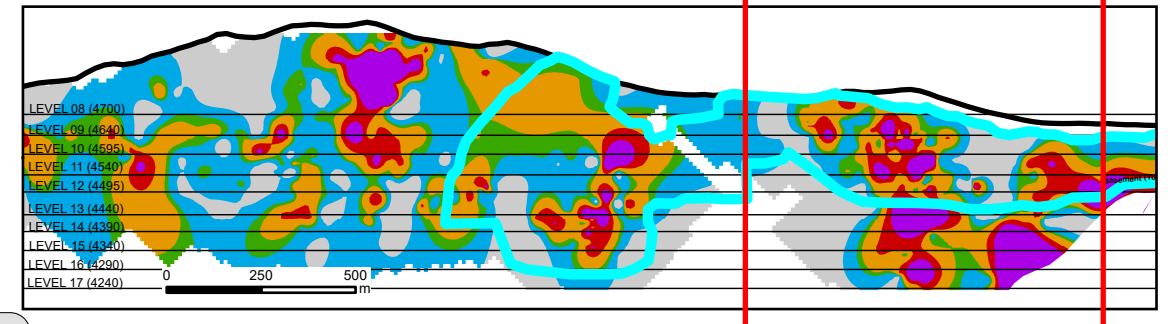


Caylloma Mine , Arequipa , Peru
Longitudinal Section
Drill Hole Results
Animas NE vein

Datum: UTM Zone 19S WGS84 May 15, 2017

SW

NE



ANIS032815
 4m @ 162 g/t Ag; 0.38 g/t Au;
 3.4 % Pb; 0.3 % Zn; PV= 131 US\$/t

ANIS027914
 1.4 m @ 72g/t Ag; 1.2g/t Au;
 3.2 % Pb; 5.8 % Zn; PV=165 US\$/t

ANIM028915
 3.2m @ 214g/t Ag; 0.04 g/t Au;
 6.9 % Pb; 3.6 % Zn; PV=247 US\$/t

ANIM034416
 1.35m @ 45g/t Ag; 0.1 g/t Au;
 2.9 % Pb; 3.3 % Zn; PV=108 US\$/t

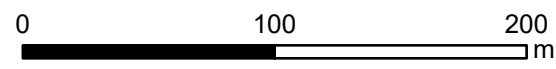
NANS002713
 3.4 m @ 161g/t Ag; 27 g/t Au;
 7.7 % Pb; 9.2 % Zn; PV= 514 US\$/t

ANIS042116
 3.6m @ 566g/t Ag; 0.1 g/t Au;
 2.1 % Pb; 2.7 % Zn; PV= 320 US\$/t

ANIS044516
 5.2m @ 220g/t Ag; 0.47g/t Au;
 16.8 % Pb; 7.2 % Zn; PV= 448 US\$/t

ANIS044416
 7.8m @ 116g/t Ag; 0.04g/t Au;
 7.8 % Pb; 9.4 % Zn; PV= 292 US\$/t

ANIS045017
 4.0m @ 304g/t Ag; 0.04g/t Au;
 13.70 % Pb; 10.1 % Zn; PV= 474 US\$/t



Notes:
 1. PV= Point Value
 2. $PV = (Ag\ g/t * 0.45) + (Au\ g/t * 7.53) + (Zn\ % * 12.98) + (Pb\ % * 15.13)$
 3. PV calculated using assumed metal prices of US\$/t 19 oz Ag , US\$/t 1,140 oz Au, US\$/t 2,150/t Pb and US\$/t 2,300/t Zn
 Metallurgical recovery rates of 85%, for Ag, 22% for Au, 94% for Pb and 90% for Zn

●	DH completed (May 2017 news release)	■	< 50
●	DH Historic	■	50 - 84
○	Historic drill holes	■	85 - 100
○	2016/17 drill holes	■	101 - 150
○	Mineral Resources	■	151 - 200
—	Production zones	■	> 200